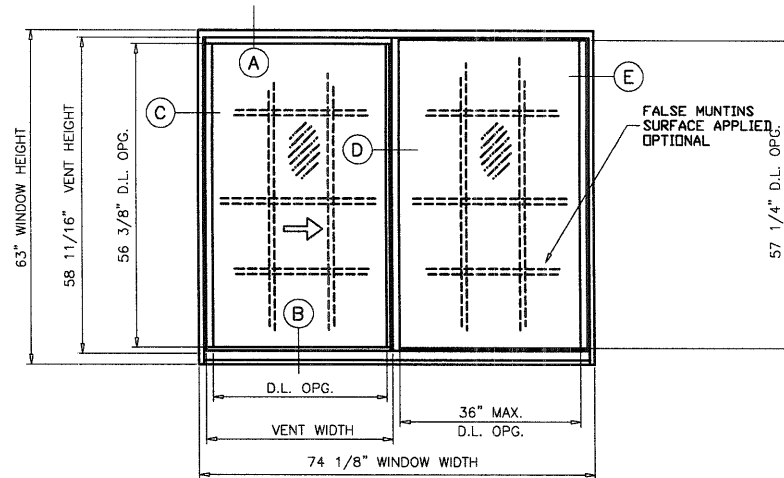


XOX FRAMES (FLANGE SHOWN)



XO FRAMES (FLANGE SHOWN)
OX OPPOSITE

**IMPACT
RESISTANT**

SERIES-9000 ALUM HORIZONTAL SLIDING WINDOW

WINDOW HAS BEEN EVALUATED AND IS IN COMPLIANCE WITH THE REQUIREMENTS FOR USE WITHIN THE STATE OF FLORIDA, INCLUDING THE "HIGH VELOCITY HURRICANE ZONE" (HVHZ). WINDOWS GLAZED WITH LAMINATED GLASS RATED FOR LARGE MISSILE IMPACT DO NOT REQUIRE THE USE OF IMPACT RESISTANT COVERING.

WIND LOADS PER APPLICABLE ASCE 7 AS REQUIRED BY THE PREVAILING BUILDING CODE.

WOOD BUCKS BY OTHERS, MUST BE ANCHORED PROPERLY TO TRANSFER LOADS TO THE STRUCTURE.

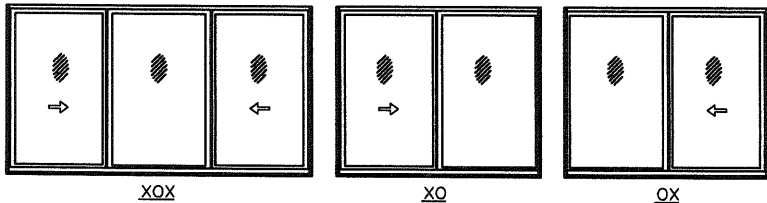
ANCHORS SHALL BE AS LISTED, SPACED AS SHOWN ON DETAILS. ANCHOR EMBEDMENT TO BASE MATERIAL SHALL BE BEYOND WALL DRESSING OR STUCCO.

ANCHORING OR LOADING CONDITIONS NOT SHOWN IN THESE DETAILS ARE NOT PART OF THIS APPROVAL.

FOR ANCHOR TYPE AND SPACING, SEE THE DESIGN LOAD SHEET.

33 1/3% STRESS INCREASE IN ANCHOR CALCULATIONS HAS NOT BEEN USED IN THE DESIGN OF THIS PRODUCT.

APPROVED CONFIGURATIONS



TYPICAL ELEVATION
TESTED UNITS

TEST INFORMATION:

SERIES	TEST BUCK SIZE	DP	WATER INF.	AIR INF.	IMPACT/CYCLE	FER	TEST REPORT #	CERTIFICATION #
9000 OX	73 1/8" X 62"	± 60.0	PER SILL	.29 CFM/FT ²	PASSED	PASSED	CTLA-B30W-4	NIO05169
9000 XOX	110" X 62"	± 55.0	PER SILL	.29 CFM/FT ²	PASSED	PASSED	CTLA-B30W-4	NIO05169

THE ABOVE ARE TEST RESULTS FOR THE SIZE TESTED AND DO NOT REFLECT THE ACTUAL DESIGN PRESSURE FOR OTHER UNITS. SEE COMPARATIVE ANALYSIS CHARTS FOR SPECIFIC DESIGN PRESSURES PER SIZE/GLASS OPTIONS. FOR SPECIFIC TEST INFORMATION, PLEASE SEE THE TEST REPORT.

APPROVAL APPLIES TO HORIZONTAL SLIDER WINDOWS OF FLANGE OR FIN FRAMES. ALSO TO SIDE BY SIDE COMBINATIONS OF HORIZONTAL SLIDERS/HORIZONTAL SLIDERS OR HORIZONTAL SLIDERS WITH OTHER WINDOW TYPES IN MODULES OF TWO OR MORE WINDOWS USING APPROVED MULLIONS.

THE PRODUCT DEPICTED ABOVE IS INTENDED FOR USE ON TYPICAL CONSTRUCTION. THE USE OF ADDITIONAL FLASHING, VAPOR BARRIERS, FASTENERS, ETC MAY BE SPECIFIED BY THE PROJECT'S DESIGN PROFESSIONAL. BASIC WIND SPEED ALONE IS NOT SUFFICIENT TO DETERMINE THE REQUIRED DESIGN PRESSURE (DP). THE REQUIRED DP MUST BE CALCULATED IN ACCORDANCE WITH ASCE 7 BY A DESIGN PROFESSIONAL THAT IS FAMILIAR WITH THE PROJECT DESIGN AND LOCATION, AS SPECIFIED IN THE PREVAILING FBC. DP COMPARATIVE ANALYSIS CHARTS AND AAMA 101 COMPLIANT TEST REPORTS ARE AVAILABLE FOR ALL NUAIR MANUFACTURED PRODUCTS. PLEASE CONSULT YOUR LOCAL BUILDING CODES FOR EXACT REQUIREMENTS.

THIS DOCUMENT MUST BE SIGNED AND SEALED TO BE VALID.

James B. Whittum, P.E.
FL # 0027689
8533 Acorn Ridge Ct.
Tampa, Florida 33625
813-926-9719

James B. Whittum
JUN 24 2008

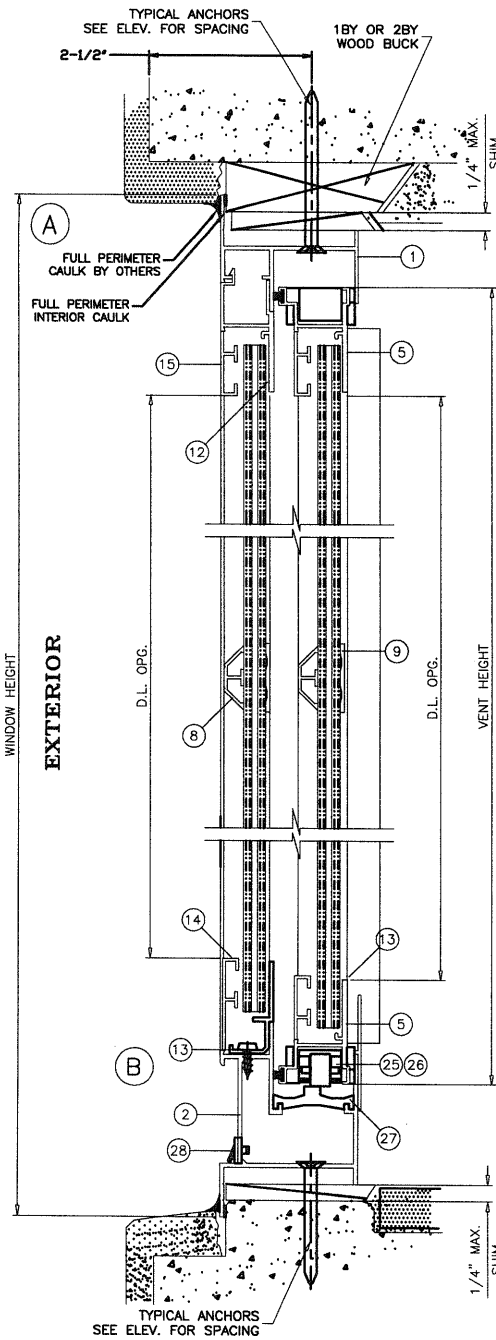


SERIES-9000 ALUM HOR ROLLER WINDOW (IMPACT)
NUAIR WINDOWS AND DOORS
8105 ANDERSON ROAD
TAMPA, FL 33684
TEL. (800) 282-8627 FAX (813) 886-9737

no.	date	by	description

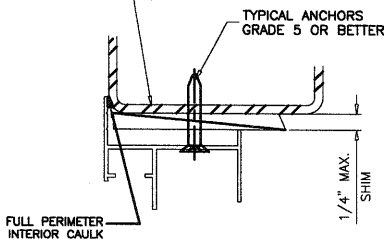
date: 06/09/08
scale: 1/2" = 1"
dr. by: DJ
chk. by:

drawing no.
HR9000
SHEET 1



IMPACT RESISTANT

METAL FL # 0027689
 (STEEL OR ALUM. 1/8" MIN. THICK)
 STEEL : $F_y = 36$ KSI MIN.
 ALUMINUM : 6063-T5 MIN.



FLANGE FRAME WINDOW

ANCHORS TO BE SPACED AS FOLLOWS:
 -ANCHORS NO MORE THAN 4" FROM EACH CORNER.
 -ANCHORS INSTALLED IN FLANGE FRAMES USE, AT MAXIMUM, 14" CENTER CENTER SPACING, OR AT PRE-PUNCHED LOCATIONS.
 -SEE DESIGN PRESSURE CHARTS FOR REQUIRED MINIMUM ANCHOR QUANTITIES.

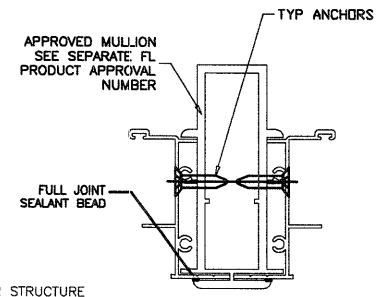
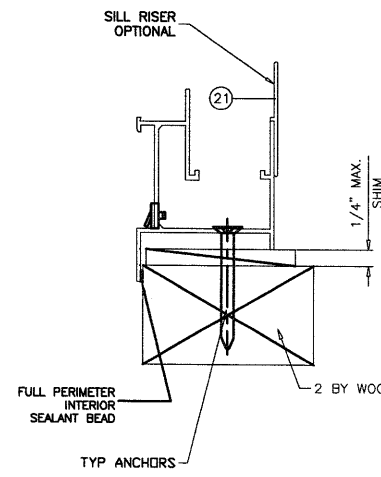
FAILURE TO SUPPORT THE FRAME USING SHIMS AT EACH FASTENER MAY RESULT IN GLASS BREAKAGE. INSTALLER MUST USE A HIGH-QUALITY, ADHESIVE CAULK UNDER THE FIN OR FLANGE.

ALL GUNNABLE SEALANTS SHALL COMPLY WITH ASTM C 920 CLASS 25 SPECIFICATION OR GREATER FOR PROPER JOINT EXPANSION AND CONTRACTION.

BUCKSTRIPS MUST BE SET IN A BEAD OF SEALANT. PRIOR TO INSTALLATION, A FULL PERIMETER SEALANT BEAD MUST BE APPLIED ONTO THE INTERIOR SIDE OF THE WINDOW FLANGE, AND AFTER INSTALLATION, THE EXTERIOR JOINT.

WEEPHOLES:

W1 = 1-1/2" LONG NOTCH AT SCREEN RETAINING LEG AT EACH END OF SILL



WOOD BUCKS NOT BY NUAIR, MUST SUSTAIN LOADS IMPOSED BY GLAZING SYSTEM AND TRANSFER THEM TO THE BUILDING STRUCTURE.

TYPICAL ANCHORS:

- 1/4" MASONRY ANCHORS
- RECOMMENDED SUPPLIERS - FLCO or ITW-BUILDEX
- INTO 2BY WOOD BUCKS OR WOOD STRUCTURE 1-3/8" MIN. PENETRATION INTO WOOD
- THRU 1BY WOOD BUCKS INTO MASONRY OR DIRECTLY INTO MASONRY
- 1-1/4" MIN. EMBED INTO MASONRY
- DIRECTLY INTO CONCRETE
- 1-1/4" MIN. EMBED INTO CONCRETE
- 3/16" DRILFLEX SELF DRILLING SCREWS INTO METAL FL # 0027689 (1/8" MIN. THICKNESS)
- #10 SMS OR SELF DRILLING SCREWS INTO APPROVED MULLIONS (NO SHIM SPACE)



SERIES-9000 ALUM HOR ROLLER WINDOW (IMPACT)
 NUAIR WINDOWS AND DOORS
 8105 ANDERSON ROAD
 TAMPA, FL 33684
 TEL. (800) 282-6627 FAX (813) 886-9737

revisions:	no	date	by	description

AND SEALED TO BE VALID.
 James B. Whittum, P.E.
 FL # 0027689
 8533 Acorn Ridge Ct.
 Tampa, Florida 33625
 813-926-9719
James B. Whittum
 JUN 24 2003

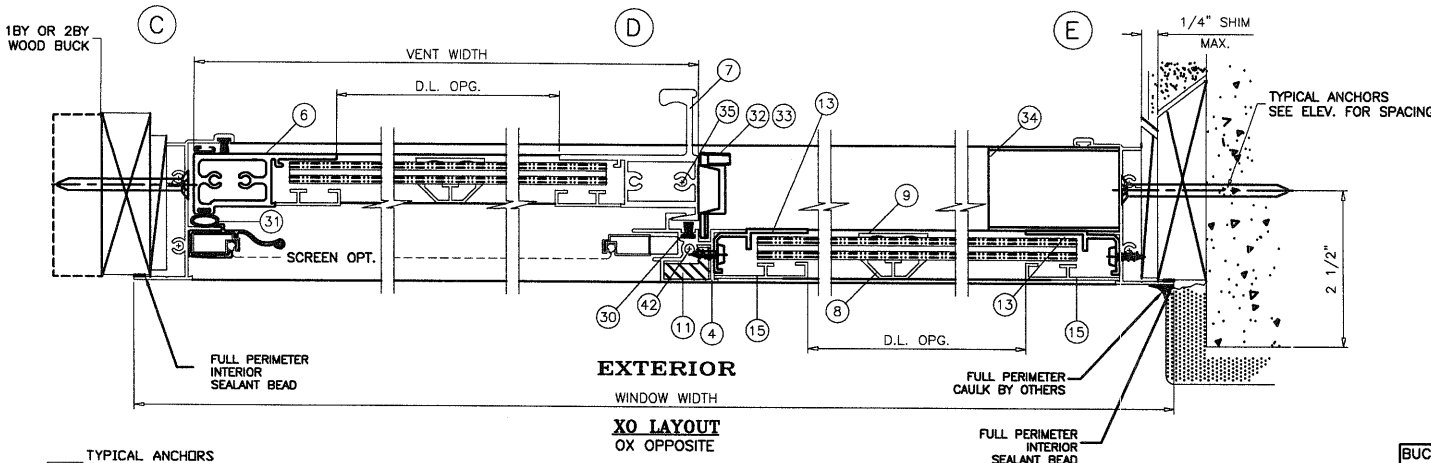
date: 08/09/08
 scale: 1/2" = 1"
 dr. by: JBR
 chk. by:
 drawing no. HR9000
 SHEET 2

THIS DOCUMENT MUST BE SIGNED

**IMPACT
RESISTANT**

FLANGE FRAME WINDOW

WOOD BUCKS NOT BY NUAIR, MUST SUSTAIN LOADS IMPOSED BY GLAZING SYSTEM AND TRANSFER THEM TO THE BUILDING STRUCTURE.

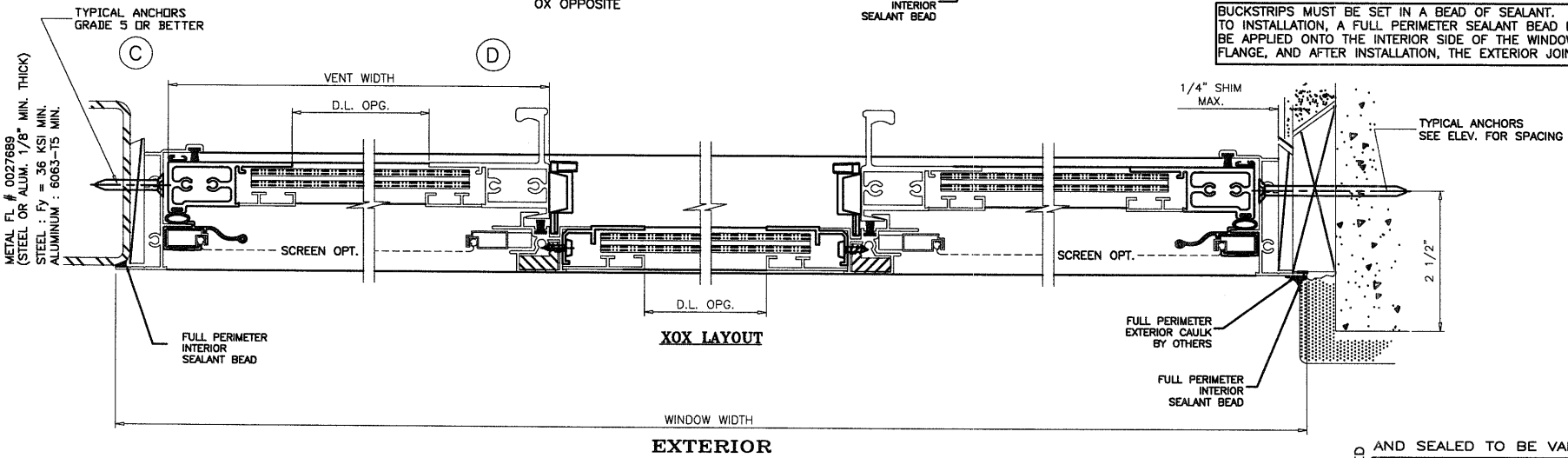


ANCHORS TO BE SPACED AS FOLLOWS:
 -ANCHORS NO MORE THAN 4" FROM EACH CORNER.
 -ANCHORS INSTALLED IN FLANGE FRAMES USE, AT MAXIMUM, 14" CENTER SPACING, OR AT PRE-PUNCHED LOCATIONS.
 -SEE DESIGN PRESSURE CHARTS FOR REQUIRED MINIMUM ANCHOR QUANTITIES.

FAILURE TO SUPPORT THE FRAME USING SHIMS AT EACH FASTENER MAY RESULT IN GLASS BREAKAGE. INSTALLER MUST USE A HIGH-QUALITY, ADHESIVE CAULK UNDER THE FIN OR FLANGE.

ALL GUNNABLE SEALANTS SHALL COMPLY WITH ASTM C 920 CLASS 25 SPECIFICATION OR GREATER FOR PROPER JOINT EXPANSION AND CONTRACTION.

BUCKSTRIPS MUST BE SET IN A BEAD OF SEALANT. PRIOR TO INSTALLATION, A FULL PERIMETER SEALANT BEAD MUST BE APPLIED ONTO THE INTERIOR SIDE OF THE WINDOW FLANGE, AND AFTER INSTALLATION, THE EXTERIOR JOINT.



INS

NUAIR

SERIES-9000 ALUM HOR ROLLER WINDOW (IMPACT)
 NUAIR WINDOWS AND DOORS
 8105 ANDERSON ROAD
 TAMPA, FL. 33684
 TEL. (800) 282-6627 FAX (813) 886-9737

no	date	description

AND SEALED TO BE VALID.
 James B. Whittum, P.E.
 FL # 0027689
 8533 Acorn Ridge Ct.
 Tampa, Florida 33625
 813-926-9719

James B. Whittum
 JUN 2 2003

THIS DOCUMENT MUST BE SIGNED

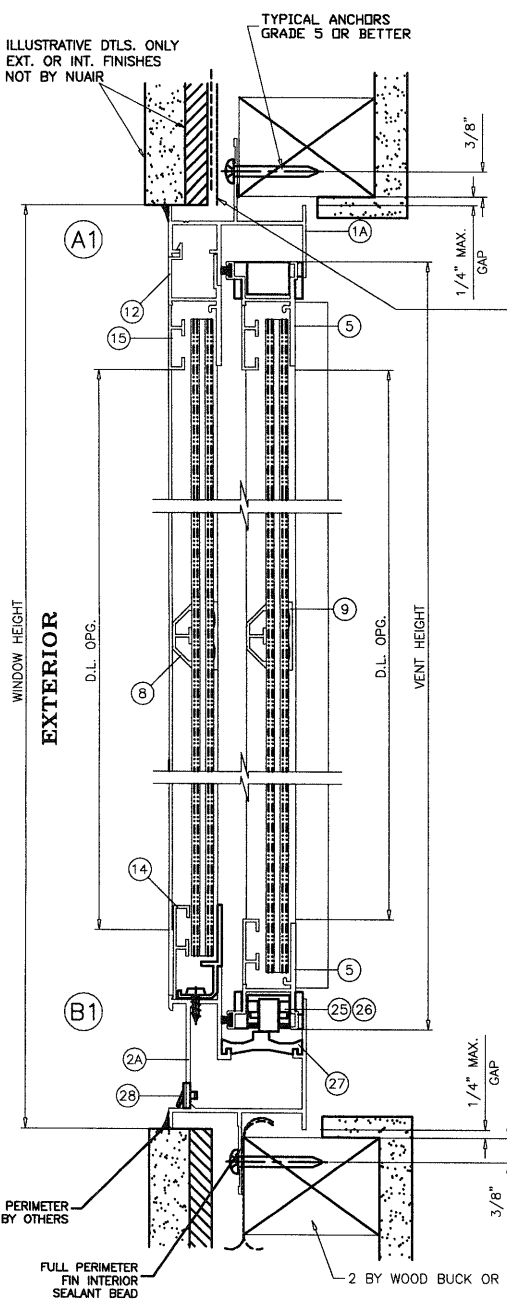
date: 05/09/08
 scale: 1/2" = 1"
 dr. by: DJ
 chk. by:

drawing no. HR9000
 SHEET 3

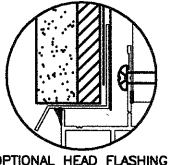
IMPACT RESISTANT

FIN FRAME WINDOW

WOOD BUCKS NOT BY NUIR, MUST SUSTAIN LOADS IMPOSED BY GLAZING SYSTEM AND TRANSFER THEM TO THE BUILDING STRUCTURE.



WEATHERPROOFING:
FLEXIBLE FLASHING SHOULD BE INSTALLED IN A WEATHERBOARD FASHION. THE TOP LAYER SHOULD OVERLAY ANY LAYER UNDERNEATH IT. THE WEATHER RESISTANT BARRIER SHOULD THEN COVER THE FLEXIBLE FLASHING AT THE HEADER. THE APPLICATION OF THE WEATHER RESISTANT BARRIER WILL VARY BASED ON WHEN IT IS INSTALLED. IF INSTALLED AFTER THE WINDOW, IT SHOULD BE TUCKED UNDER THE SILL FLASHING AND OVERLAP THE JAMBS AND HEAD FLASHING.



ANCHORS TO BE SPACED AS FOLLOWS:
-ANCHORS NO MORE THAN 4" FROM EACH CORNER.
-ANCHORS INSTALLED INTO FIN FRAMES USE, AT MAXIMUM, 10" CENTER TO CENTER SPACING.
-SEE DESIGN PRESSURE CHARTS FOR REQUIRED MINIMUM ANCHOR QUANTITIES.

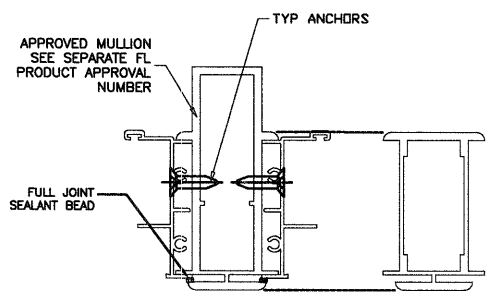
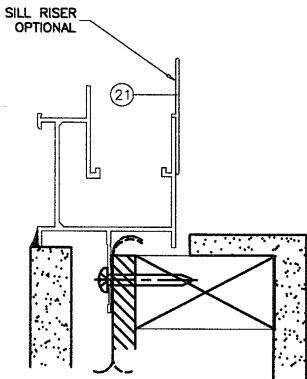
FAILURE TO SUPPORT THE FRAME USING SHIMS AT EACH FASTENER MAY RESULT IN GLASS BREAKAGE. INSTALLER MUST USE A HIGH-QUALITY, ADHESIVE CAULK UNDER THE FIN OR FLANGE.

ALL GUNNABLE SEALANTS SHALL COMPLY WITH ASTM C 920 CLASS 25 SPECIFICATION OR GREATER FOR PROPER JOINT EXPANSION AND CONTRACTION.

BUCKSTRIPS MUST BE SET IN A BEAD OF SEALANT. PRIOR TO INSTALLATION, A FULL PERIMETER SEALANT BEAD MUST BE APPLIED ONTO THE INTERIOR SIDE OF THE WINDOW FIN, AND AFTER INSTALLATION, THE EXTERIOR JOINT.

WEEPHOLES:

W1 = 1-1/2" LONG NOTCH AT SCREEN RETAINING LEG AT EACH END OF SILL



TYPICAL ANCHORS:
1/4" MASONRY ANCHORS
ELCO, ITW-BUILDEX OR EQUIV. MASONRY ANCHORS
INTO WOOD STRUCTURE
1-3/8" MIN. PENETRATION INTO WOOD
#8 X 1-3/4" SMS OR DRYWALL SCREWS
INTO WOOD FL # 0027689
1-3/8" MIN. PENETRATION INTO WOOD
#10 SMS OR SELF DRILLING SCREWS
INTO APPROVED MULLIONS
(NO SHIM SPACE)



SERIES-9000 ALUM HOR ROLLER WINDOW (IMPACT)
NUIR WINDOWS AND DOORS
8105 ANDERSON ROAD
TAMPA, FL. 33684
TEL. (800) 282-6627 FAX (813) 886-9737

revisions:	no	date	description

AND SEALED TO BE VALID.
James B. Whittum, P.E.
FL # 0027689
8533 Acorn Ridge Ct.
Tampa, Florida 33625
813-926-9719
James B. Whittum
JUN 2 2003

THIS DOCUMENT MUST BE SIGNED

date: 05/09/08
scale: 1/2" = 1"
dr. by: DJ
chk. by:
drawing no.
HR9000
SHEET 4

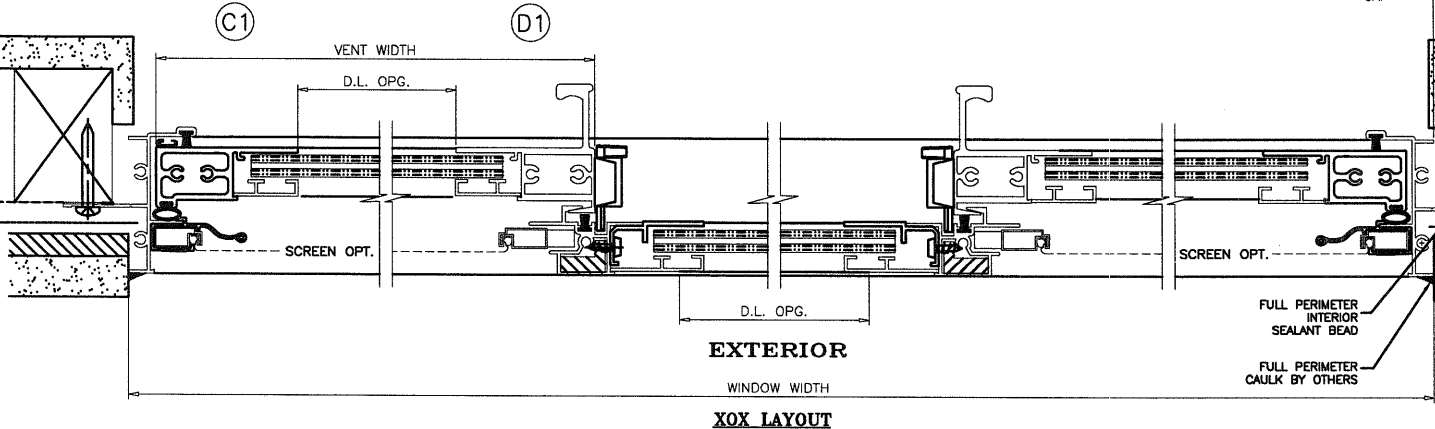
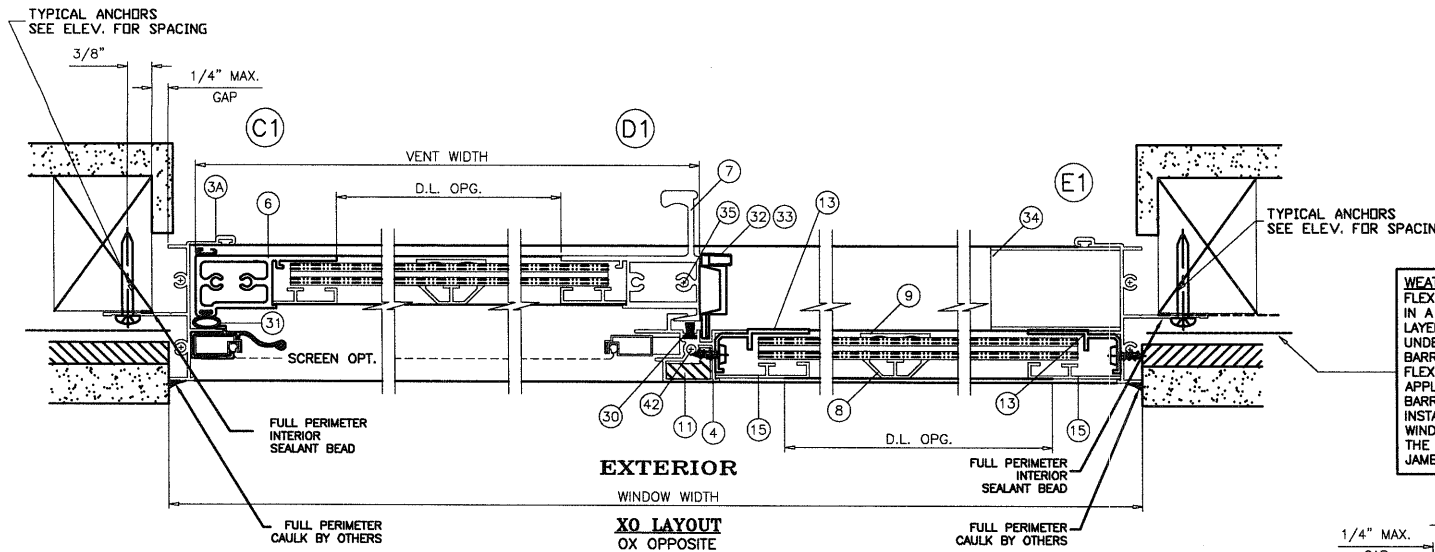
**IMPACT
RESISTANT**

FIN FRAME WINDOW

WOOD BUCKS NOT BY NUAIR, MUST SUSTAIN LOADS IMPOSED BY GLAZING SYSTEM AND TRANSFER THEM TO THE BUILDING STRUCTURE.

ANCHORS TO BE SPACED AS FOLLOWS:
 -ANCHORS NO MORE THAN 4" FROM EACH CORNER.
 -ANCHORS INSTALLED INTO FIN FRAMES USE, AT MAXIMUM, 10" CENTER TO CENTER SPACING.
 -SEE DESIGN PRESSURE CHARTS FOR REQUIRED MINIMUM ANCHOR QUANTITIES.

WEATHERPROOFING:
 FLEXIBLE FLASHING SHOULD BE INSTALLED IN A WEATHERBOARD FASHION. THE TOP LAYER SHOULD OVERLAY ANY LAYER UNDERNEATH IT. THE WEATHER RESISTANT BARRIER SHOULD THEN COVER THE FLEXIBLE FLASHING AT THE HEADER. THE APPLICATION OF THE WEATHER RESISTANT BARRIER WILL VARY BASED ON WHEN IT IS INSTALLED. IF INSTALLED AFTER THE WINDOW, IT SHOULD BE TUCKED UNDER THE SILL FLASHING AND OVERLAP THE JAMBS AND HEAD FLASHING.



FAILURE TO SUPPORT THE FRAME USING SHIMS AT EACH FASTENER MAY RESULT IN GLASS BREAKAGE. INSTALLER MUST USE A HIGH-QUALITY, ADHESIVE CAULK UNDER THE FIN OR FLANGE.

ALL GUNNABLE SEALANTS SHALL COMPLY WITH ASTM C 920 CLASS 25 SPECIFICATION OR GREATER FOR PROPER JOINT EXPANSION AND CONTRACTION.

BUCKSTRIPS MUST BE SET IN A BEAD OF SEALANT. PRIOR TO INSTALLATION, A FULL PERIMETER SEALANT BEAD MUST BE APPLIED ONTO THE INTERIOR SIDE OF THE WINDOW FIN, AND AFTER INSTALLATION, THE EXTERIOR JOINT.

THIS DOCUMENT MUST BE SIGNED

AND SEALED TO BE VALID.

James B. Whittum, P.E.
 FL # 0027689
 8533 Acorn Ridge Ct.
 Tampa, Florida 33625
 813-926-9719

James B. Whittum
 JUN 24 2008

INS

NUAIR

SERIES-9000 ALUM HOR ROLLER WINDOW (IMPACT)

NUAIR WINDOWS AND DOORS
 8105 ANDERSON ROAD
 TAMPA, FL. 33684
 TEL. (800) 282-6627 FAX (813) 866-9737

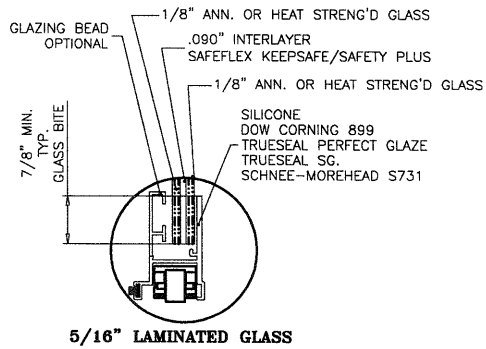
revisions:	no	date	by	description

date: 05/09/08
 scale: 1/2" = 1"
 dr. by: DJ
 chk. by:

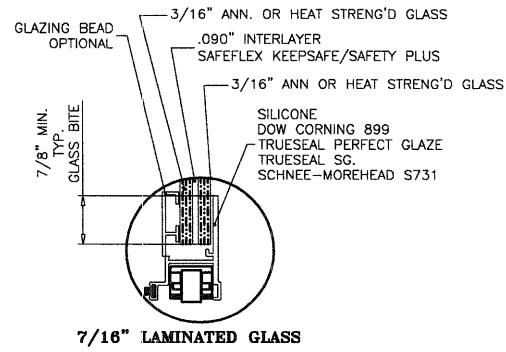
drawing no.
 HR9000

SHEET 5

EXTERIOR



5/16" LAMINATED GLASS



7/16" LAMINATED GLASS

NOTE: WINDOWS TESTED WITHOUT GLAZING BEAD

THIS DOCUMENT MUST BE SIGNED

AND SEALED TO BE VALID.

James B. Whittum, P.E.
 FL # 0027689
 8533 Acorn Ridge Ct.
 Tampa, Florida 33625
 813-926-9719

James B. Whittum
 JUN 24 2008



SERIES-9000 ALUM HOR ROLLER WINDOW (IMPACT)
 NUIR WINDOWS AND DOORS
 8105 ANDERSON ROAD
 TAMPA, FL. 33684
 TEL. (800) 282-6627 FAX (813) 886-9737

no	date	by	description

date: 05/08/08
 scale: 1/2" = 1"
 dr. by: DJ
 chk. by:

drawing no.
 HR9000
 SHEET 6

MAT

NUAIR

SERIES-9000 ALUM HOR ROLLER WINDOW (IMPACT)

NUAIR WINDOWS AND DOORS
8105 ANDERSON ROAD
TAMPA, FL 33684

TEL. (800) 282-6627 FAX (813) 886-9737

revisions:
no. date by description

date: 05/09/08
scale: 1/2" = 1"
dr. by: DJ
chk. by:

drawing no.
HR9000
SHEET 7

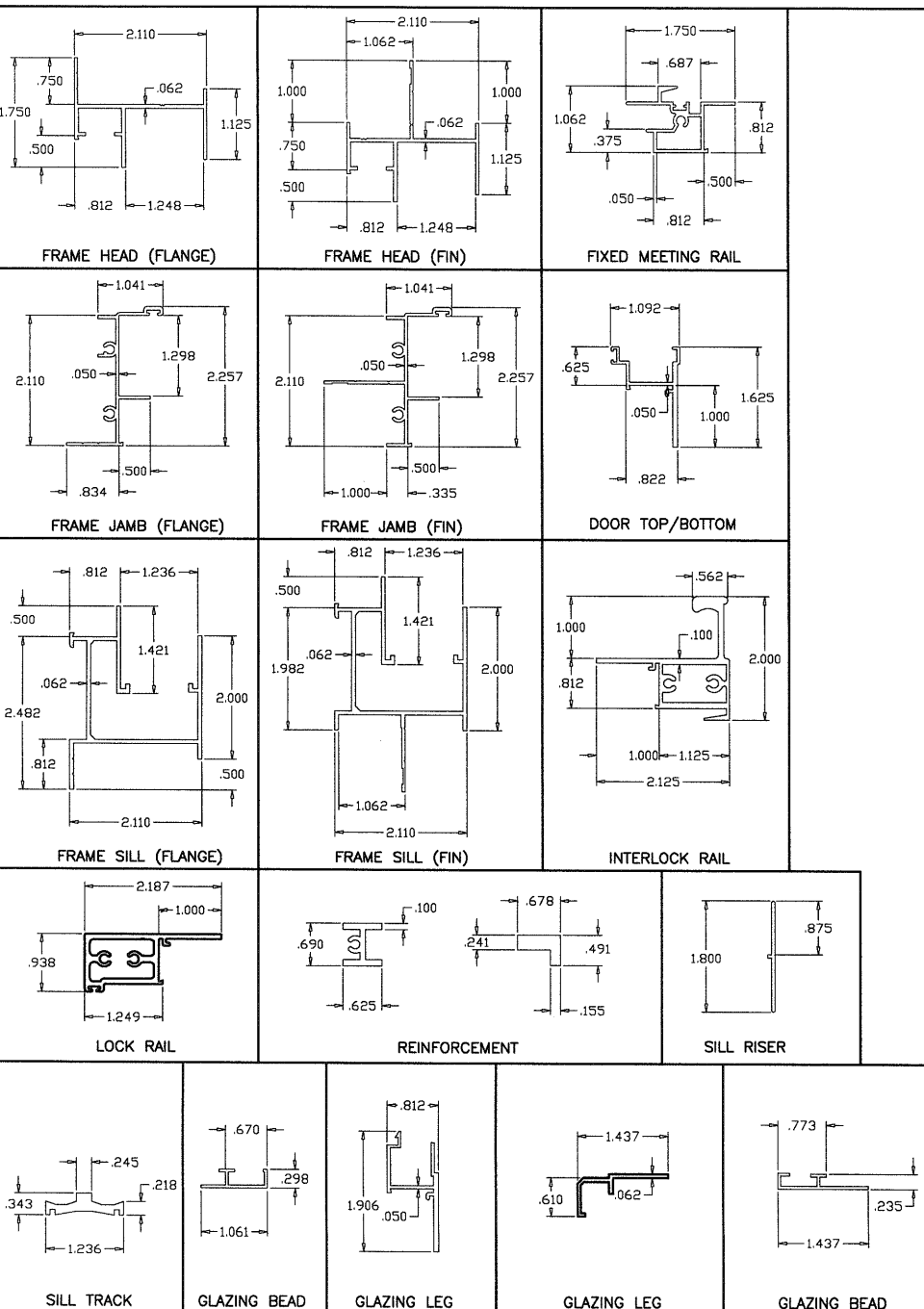
AND SEALED TO BE VALID.

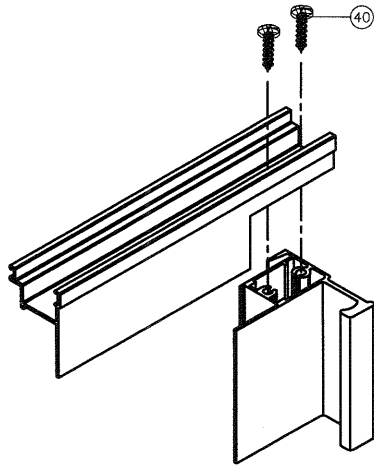
James B. Whittum, P.E.
FL # 0027689
8533 Acorn Ridge Ct.
Tampa, Florida 33625
813-926-9719

James B. Whittum
JUN 2 2003

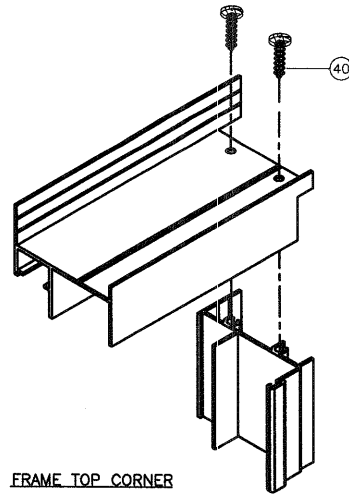
THIS DOCUMENT MUST BE SIGNED

ITEM #	PART #	QUANTITY	DESCRIPTION	MATERIAL	MANF./SUPPLIER/REMARKS
1	994	1	FRAME HEAD - FLANGE	6063-T5	-
1A	902	1	FRAME HEAD - FIN	6063-T5	-
2	916	1	FRAME SILL - FLANGE	6063-T5	-
2A	917	1	FRAME SILL - FIN	6063-T5	-
3	904	2	FRAME JAMB - FLANGE	6063-T5	-
3A	908	2	FRAME JAMB - FIN	6063-T5	-
4	990	1	FIXED MEETING RAIL	6063-T5	-
5	042	2	DOOR TOP & BOTTOM	6063-T5	-
6	041	1	DOOR LOCK RAIL	6063-T5	-
7	046	1	DOOR INTERLOCK RAIL	6063-T5	-
8	933/300	AS REQ'D	IMPACT APPLIED MUNTIN	6063-T5	-
9	VARIABLES	AS REQ'D	APPLIED MUNTIN BACKER	6063-T5/VINYL	-
10	956	1	REINFORCEMENT	6063-T5	-
11	891	1	MTG. RAIL REINFORCEMENT	6063-T5	-
12	043	AS REQ'D	IMPACT GLAZING LEG	6063-T5	-
13	450	AS REQ'D	IMPACT GLAZING LEG	6063-T5	-
14	940	AS REQ'D	IMPACT LITE BEADING (WIDE)	6063-T5	-
15	942	AS REQ'D	IMPACT LITE BEADING (NARROW)	6063-T5	-
21	943	AS REQ'D	SILL RISER (OPTIONAL)	6063-T5	-
23	7HP51	AS REQ'D	GLASS SETTING BLOCK	RUBBER	1/16 X 1/2 X 1 1/2
25	7HP12W	2	ROLLER WHEEL & PIN	STEEL	CORROSION RESISTANT
26	7HP13W	2	ROLLER HOUSING	NYLON (NATURAL)	INJECTION MOLDED
27	6H909	AS REQ'D	TRACK INSERT	EXTRUDED VINYL	-
28	7HP24B/W	AS REQ'D	WEEPHOLE COVER	VINYL	INJECTION MOLDED
29	79P37C	2	SCREW PLUG	CLEAR PLASTIC	-
30	69W40	AS REQ'D	DOOR & MTNG. RAIL WOOLPILE	-	SILICON TREATED PILE
31	6UV40B	AS REQ'D	JAMB BULB VINYL	EXTRUDED VINYL	-
32	7HH15	AS REQ'D	DOOR LATCH	DIE CAST	PAINTED WHITE OR BLACK
33	7HF16	AS REQ'D	DOOR LATCH ASSEMBLY SCREW	ZINC PL. STEEL	8-18 X 3/4 TYPE AB, II C'SUNK
34	79P26	2	DOOR STOP	EXTR'D POLYVINYL	-
35	79340	4	DOOR ASSEMBLY SCREW	ZINC PL. STEEL	#8 X 3/4 PANHEAD
39	7UF23	AS REQ'D	GLAZING LEG ADAPTER SCREW	-	#7 X 7/16, PHILIPS PANHD FRAMING SCREW
40	7UF23	4	FRAME ASSEMBLY SCREW	ZINC PL. STEEL	#8 X 3/4 PANHEAD
40A	-	2	FRAME ASSEMBLY SCREW	ZINC PL. STEEL	#8 X 2" PANHEAD
42	7UF23	2	FRAME MEETING RAIL SCREW	STAINLESS STEEL	#8 X 2, PANHEAD
43	9B3	2	PW INSERT	6063-T5	-
70	7XP03	8	INTEGRAL FIN CORNER INS.	-	ADHESIVE BACKED FOAM

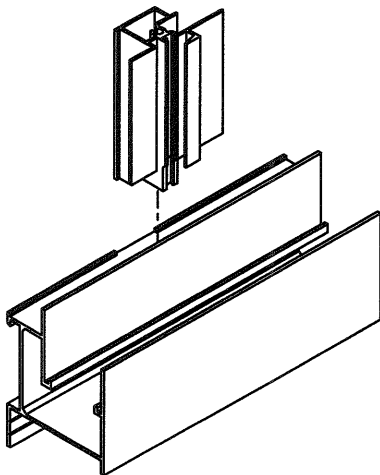




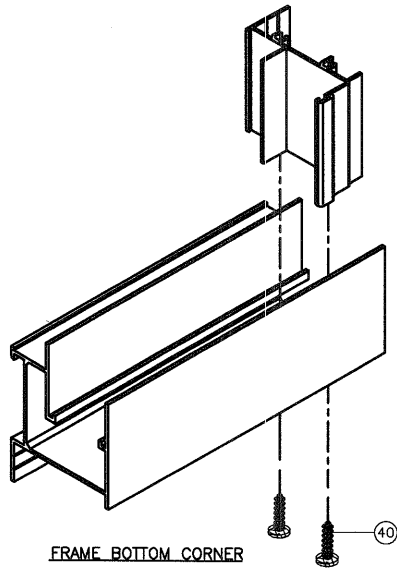
VENT TOP/BOTTOM CORNERS



FRAME TOP CORNER



FIXED MTG. RAIL CORNER



FRAME BOTTOM CORNER

ASM

NUAIR

SERIES-9000 ALUM HOR ROLLER WINDOW (IMPACT)

NUAIR WINDOWS AND DOORS
8105 ANDERSON ROAD
TAMPA, FL 33684
TEL. (800) 282-6627 FAX (813) 886-9737

no	date	by	description

AND SEALED TO BE VALID.
James B. Whittum, P.E
FL # 0027689
8533 Acorn Ridge Ct.
Tampa, Florida 33625
813-926-9719

THIS DOCUMENT MUST BE SIGNED

James B. Whittum
JUN 2 2013

date: 05/09/08	scale: 1/2" = 1"
chk. by: DI	chk. by:

drawing no.
HR9000
SHEET 8

CA1



SERIES-9000 ALUM HOR ROLLER WINDOW (IMPACT)
 NUAIR WINDOWS AND DOORS
 8105 ANDERSON ROAD
 TAMPA, FL 33684
 TEL. (800) 282-6627 FAX (813) 886-9737

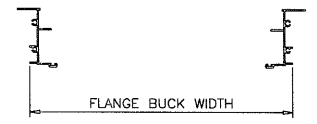
no	date	description

date: 05/09/08
 scale: 1/2" = 1"
 dr. by: DJ
 chk. by:

drawing no.
 HR9000
 SHEET 9

9000HR Design Pressures (psf) XO or OX: Masonry

Buck Size (inches)		Call Name	# of 1/4 Screws			5/16" An.		5/16" IG		5/16" HS		7/16" An.		7/16" HS	
Width	Height		Jamb	Hdr	Sill	Ext.(+)	Int.(-)	Ext.(+)	Int.(-)	Ext.(+)	Int.(-)	Ext.(+)	Int.(-)	Ext.(+)	Int.(-)
25.5	25	1A2	3	3	0	60.0	60.0	60.0	60.0	60.0	60.0	60.0	60.0	60.0	60.0
36	25	22	3	3	0	60.0	60.0	60.0	60.0	60.0	60.0	60.0	60.0	60.0	60.0
52.125	25	32	3	5	0	60.0	60.0	60.0	60.0	60.0	60.0	60.0	60.0	60.0	60.0
73.125	25	42	3	6	0	60.0	60.0	60.0	60.0	60.0	60.0	60.0	60.0	60.0	60.0
25.5	37.375	1A3	3	3	0	60.0	60.0	60.0	60.0	60.0	60.0	60.0	60.0	60.0	60.0
36	37.375	23	3	3	0	60.0	60.0	60.0	60.0	60.0	60.0	60.0	60.0	60.0	60.0
52.125	37.375	33	3	5	0	60.0	60.0	60.0	60.0	60.0	60.0	60.0	60.0	60.0	60.0
73.125	37.375	43	3	7	0	60.0	60.0	60.0	60.0	60.0	60.0	60.0	60.0	60.0	60.0
25.5	49.625	1A4	4	3	0	60.0	60.0	60.0	60.0	60.0	60.0	60.0	60.0	60.0	60.0
36	49.625	24	4	3	0	60.0	60.0	60.0	60.0	60.0	60.0	60.0	60.0	60.0	60.0
52.125	49.625	34	4	5	0	60.0	60.0	60.0	60.0	60.0	60.0	60.0	60.0	60.0	60.0
73.125	49.625	44	4	7	0	60.0	60.0	60.0	60.0	60.0	60.0	60.0	60.0	60.0	60.0
25.5	62	1A5	5	3	0	60.0	60.0	60.0	60.0	60.0	60.0	60.0	60.0	60.0	60.0
36	62	25	5	3	0	60.0	60.0	60.0	60.0	60.0	60.0	60.0	60.0	60.0	60.0
52.125	62	35	5	5	0	60.0	60.0	60.0	60.0	60.0	60.0	60.0	60.0	60.0	60.0
73.125	62	45	5	7	0	60.0	60.0	60.0	60.0	60.0	60.0	60.0	60.0	60.0	60.0
24	24	2020	3	3	0	60.0	60.0	60.0	60.0	60.0	60.0	60.0	60.0	60.0	60.0
36	24	3020	3	3	0	60.0	60.0	60.0	60.0	60.0	60.0	60.0	60.0	60.0	60.0
48	24	4020	3	5	0	60.0	60.0	60.0	60.0	60.0	60.0	60.0	60.0	60.0	60.0
60	24	5020	3	5	0	60.0	60.0	60.0	60.0	60.0	60.0	60.0	60.0	60.0	60.0
72	24	6020	3	6	0	60.0	60.0	60.0	60.0	60.0	60.0	60.0	60.0	60.0	60.0
24	36	2030	3	3	0	60.0	60.0	60.0	60.0	60.0	60.0	60.0	60.0	60.0	60.0
36	36	3030	3	3	0	60.0	60.0	60.0	60.0	60.0	60.0	60.0	60.0	60.0	60.0
48	36	4030	3	5	0	60.0	60.0	60.0	60.0	60.0	60.0	60.0	60.0	60.0	60.0
60	36	5030	3	5	0	60.0	60.0	60.0	60.0	60.0	60.0	60.0	60.0	60.0	60.0
72	36	6030	3	6	0	60.0	60.0	60.0	60.0	60.0	60.0	60.0	60.0	60.0	60.0
24	48	2040	4	3	0	60.0	60.0	60.0	60.0	60.0	60.0	60.0	60.0	60.0	60.0
36	48	3040	4	3	0	60.0	60.0	60.0	60.0	60.0	60.0	60.0	60.0	60.0	60.0
48	48	4040	4	5	0	60.0	60.0	60.0	60.0	60.0	60.0	60.0	60.0	60.0	60.0
60	48	5040	5	6	0	60.0	60.0	60.0	60.0	60.0	60.0	60.0	60.0	60.0	60.0
72	48	6040	5	6	0	60.0	60.0	60.0	60.0	60.0	60.0	60.0	60.0	60.0	60.0
24	60	2050	5	3	0	60.0	60.0	60.0	60.0	60.0	60.0	60.0	60.0	60.0	60.0
36	60	3050	5	3	0	60.0	60.0	60.0	60.0	60.0	60.0	60.0	60.0	60.0	60.0
48	60	4050	6	5	0	60.0	60.0	60.0	60.0	60.0	60.0	60.0	60.0	60.0	60.0
60	60	5050	6	6	0	60.0	60.0	60.0	60.0	60.0	60.0	60.0	60.0	60.0	60.0
72	60	6050	6	6	0	60.0	60.0	60.0	60.0	60.0	60.0	60.0	60.0	60.0	60.0



FLANGE FRAME WINDOW

DESIGN LOAD ANALYSIS NOTES:
 -VALUES BASED ON PA201, 202, & 203 TEST RESULTS.
 -STRUCTURAL ANALYSIS NOT APPLICABLE FOR IMPACT-RESISTANT PRODUCTS.
 -GLASS ANALYSIS PER ASTM E1300.
 -FASTENER CALCULATIONS FOR SHEAR AND BENDING HAVE BEEN CALCULATED WITH A .164" SCREW DIAMETER (FOR 1/4" NOMINAL) AND WITHOUT A 1/3 LOAD INCREASE.

XO or OX - LIMIT EXTERIOR (+) LOADS AS FOLLOWS
 WITHOUT 1 " SILL HEIGHT EXTENDER = +55.0 PSF
 WITH 1 " SILL HEIGHT EXTENDER = +65.0 PSF

AND SEALED TO BE VALID.
 James B. Whittum, P.E.
 FL # 0027689
 8533 Acorn Ridge Ct.
 Tampa, Florida 33625
 813-926-9719

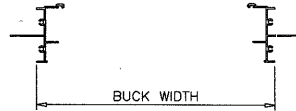
James B. Whittum

JUL 09 2008

THIS DOCUMENT MUST BE SIGNED

9000HR Design Pressures (psf) XO or OX: Fin Installation

Buck Size (inches)		Call Name	# of Anchors			5/16" An.				5/16" IG				5/16" HS				7/16" An.				7/16" HS			
						Deck Screw		#10 SM Screw		Deck Screw		#10 SM Screw		Deck Screw		#10 SM Screw		Deck Screw		#10 SM Screw		Deck Screw		#10 SM Screw	
Width	Height		Jamb	Hdr	Sill	Ext.(+)	Int.(-)	Ext.(+)	Int.(-)	Ext.(+)	Int.(-)	Ext.(+)	Int.(-)	Ext.(+)	Int.(-)	Ext.(+)	Int.(-)	Ext.(+)	Int.(-)	Ext.(+)	Int.(-)	Ext.(+)	Int.(-)	Ext.(+)	Int.(-)
25.5	25	1A2	4	4	4	60.0	60.0	60.0	60.0	60.0	60.0	60.0	60.0	60.0	60.0	60.0	60.0	60.0	60.0	60.0	60.0	60.0	60.0	60.0	60.0
36	25	22	4	5	5	60.0	60.0	60.0	60.0	60.0	60.0	60.0	60.0	60.0	60.0	60.0	60.0	60.0	60.0	60.0	60.0	60.0	60.0	60.0	60.0
52.125	25	32	4	6	6	60.0	60.0	60.0	60.0	60.0	60.0	60.0	60.0	60.0	60.0	60.0	60.0	60.0	60.0	60.0	60.0	60.0	60.0	60.0	60.0
73.125	25	42	4	9	9	60.0	60.0	60.0	60.0	60.0	60.0	60.0	60.0	60.0	60.0	60.0	60.0	60.0	60.0	60.0	60.0	60.0	60.0	60.0	60.0
25.5	37.375	1A3	5	4	4	60.0	60.0	60.0	60.0	60.0	60.0	60.0	60.0	60.0	60.0	60.0	60.0	60.0	60.0	60.0	60.0	60.0	60.0	60.0	60.0
36	37.375	23	5	5	5	60.0	60.0	60.0	60.0	60.0	60.0	60.0	60.0	60.0	60.0	60.0	60.0	60.0	60.0	60.0	60.0	60.0	60.0	60.0	60.0
52.125	37.375	33	5	6	6	60.0	60.0	60.0	60.0	60.0	60.0	60.0	60.0	60.0	60.0	60.0	60.0	60.0	60.0	60.0	60.0	60.0	60.0	60.0	60.0
73.125	37.375	43	5	9	9	60.0	60.0	60.0	60.0	60.0	60.0	60.0	60.0	60.0	60.0	60.0	60.0	60.0	60.0	60.0	60.0	60.0	60.0	60.0	60.0
25.5	49.625	1A4	6	4	4	60.0	60.0	60.0	60.0	60.0	60.0	60.0	60.0	60.0	60.0	60.0	60.0	60.0	60.0	60.0	60.0	60.0	60.0	60.0	60.0
36	49.625	24	6	5	5	60.0	60.0	60.0	60.0	60.0	60.0	60.0	60.0	60.0	60.0	60.0	60.0	60.0	60.0	60.0	60.0	60.0	60.0	60.0	60.0
52.125	49.625	34	6	6	6	60.0	60.0	60.0	60.0	60.0	60.0	60.0	60.0	60.0	60.0	60.0	60.0	60.0	60.0	60.0	60.0	60.0	60.0	60.0	60.0
73.125	49.625	44	6	9	9	60.0	60.0	60.0	60.0	60.0	60.0	60.0	60.0	60.0	60.0	60.0	60.0	60.0	60.0	60.0	60.0	60.0	60.0	60.0	60.0
25.5	62	1A5	7	4	4	60.0	60.0	60.0	60.0	60.0	60.0	60.0	60.0	60.0	60.0	60.0	60.0	60.0	60.0	60.0	60.0	60.0	60.0	60.0	60.0
36	62	25	7	5	5	60.0	60.0	60.0	60.0	60.0	60.0	60.0	60.0	60.0	60.0	60.0	60.0	60.0	60.0	60.0	60.0	60.0	60.0	60.0	60.0
52.125	62	35	7	6	6	60.0	60.0	60.0	60.0	60.0	60.0	60.0	60.0	60.0	60.0	60.0	60.0	60.0	60.0	60.0	60.0	60.0	60.0	60.0	60.0
73.125	62	45	7	9	9	60.0	60.0	60.0	60.0	60.0	60.0	60.0	60.0	60.0	60.0	60.0	60.0	60.0	60.0	60.0	60.0	60.0	60.0	60.0	60.0
24	24	2020	4	4	4	60.0	60.0	60.0	60.0	60.0	60.0	60.0	60.0	60.0	60.0	60.0	60.0	60.0	60.0	60.0	60.0	60.0	60.0	60.0	60.0
36	24	3020	4	5	5	60.0	60.0	60.0	60.0	60.0	60.0	60.0	60.0	60.0	60.0	60.0	60.0	60.0	60.0	60.0	60.0	60.0	60.0	60.0	60.0
48	24	4020	4	6	6	60.0	60.0	60.0	60.0	60.0	60.0	60.0	60.0	60.0	60.0	60.0	60.0	60.0	60.0	60.0	60.0	60.0	60.0	60.0	60.0
60	24	5020	4	7	7	60.0	60.0	60.0	60.0	60.0	60.0	60.0	60.0	60.0	60.0	60.0	60.0	60.0	60.0	60.0	60.0	60.0	60.0	60.0	60.0
72	24	6020	4	8	8	60.0	60.0	60.0	60.0	60.0	60.0	60.0	60.0	60.0	60.0	60.0	60.0	60.0	60.0	60.0	60.0	60.0	60.0	60.0	60.0
24	36	2030	5	4	4	60.0	60.0	60.0	60.0	60.0	60.0	60.0	60.0	60.0	60.0	60.0	60.0	60.0	60.0	60.0	60.0	60.0	60.0	60.0	60.0
36	36	3030	5	5	5	60.0	60.0	60.0	60.0	60.0	60.0	60.0	60.0	60.0	60.0	60.0	60.0	60.0	60.0	60.0	60.0	60.0	60.0	60.0	60.0
48	36	4030	5	6	6	60.0	60.0	60.0	60.0	60.0	60.0	60.0	60.0	60.0	60.0	60.0	60.0	60.0	60.0	60.0	60.0	60.0	60.0	60.0	60.0
60	36	5030	5	7	7	60.0	60.0	60.0	60.0	60.0	60.0	60.0	60.0	60.0	60.0	60.0	60.0	60.0	60.0	60.0	60.0	60.0	60.0	60.0	60.0
72	36	6030	5	8	8	60.0	60.0	60.0	60.0	60.0	60.0	60.0	60.0	60.0	60.0	60.0	60.0	60.0	60.0	60.0	60.0	60.0	60.0	60.0	60.0
24	48	2040	6	4	4	60.0	60.0	60.0	60.0	60.0	60.0	60.0	60.0	60.0	60.0	60.0	60.0	60.0	60.0	60.0	60.0	60.0	60.0	60.0	60.0
36	48	3040	6	5	5	60.0	60.0	60.0	60.0	60.0	60.0	60.0	60.0	60.0	60.0	60.0	60.0	60.0	60.0	60.0	60.0	60.0	60.0	60.0	60.0
48	48	4040	6	6	6	60.0	60.0	60.0	60.0	60.0	60.0	60.0	60.0	60.0	60.0	60.0	60.0	60.0	60.0	60.0	60.0	60.0	60.0	60.0	60.0
60	48	5040	6	7	7	60.0	60.0	60.0	60.0	60.0	60.0	60.0	60.0	60.0	60.0	60.0	60.0	60.0	60.0	60.0	60.0	60.0	60.0	60.0	60.0
72	48	6040	6	8	8	60.0	60.0	60.0	60.0	60.0	60.0	60.0	60.0	60.0	60.0	60.0	60.0	60.0	60.0	60.0	60.0	60.0	60.0	60.0	60.0
24	60	2050	7	4	4	60.0	60.0	60.0	60.0	60.0	60.0	60.0	60.0	60.0	60.0	60.0	60.0	60.0	60.0	60.0	60.0	60.0	60.0	60.0	60.0
36	60	3050	7	5	5	60.0	60.0	60.0	60.0	60.0	60.0	60.0	60.0	60.0	60.0	60.0	60.0	60.0	60.0	60.0	60.0	60.0	60.0	60.0	60.0
48	60	4050	7	6	6	60.0	60.0	60.0	60.0	60.0	60.0	60.0	60.0	60.0	60.0	60.0	60.0	60.0	60.0	60.0	60.0	60.0	60.0	60.0	60.0
60	60	5050	7	7	7	60.0	60.0	60.0	60.0	60.0	60.0	60.0	60.0	60.0	60.0	60.0	60.0	60.0	60.0	60.0	60.0	60.0	60.0	60.0	60.0
72	60	6050	7	8	8	60.0	60.0	60.0	60.0	60.0	60.0	60.0	60.0	60.0	60.0	60.0	60.0	60.0	60.0	60.0	60.0	60.0	60.0	60.0	60.0



FIN FRAME WINDOW

DESIGN LOAD ANALYSIS NOTES:
 -VALUES BASED ON PA201, 202, & 203 TEST RESULTS.
 -STRUCTURAL ANALYSIS NOT APPLICABLE FOR IMPACT-RESISTANT PRODUCTS.
 -GLASS ANALYSIS PER ASTM E1300.
 -FASTENER CALCULATIONS FOR SHEAR AND BENDING HAVE BEEN CALCULATED WITH A .164" SCREW DIAMETER (FOR 1/4" NOMINAL) AND WITHOUT A 1/3 LOAD INCREASE.

XO or OX - LIMIT EXTERIOR (+) LOADS AS FOLLOWS
 WITHOUT 1" SILL HEIGHT EXTENDER = +55.0 PSF
 WITH 1" SILL HEIGHT EXTENDER = +65.0 PSF

AND SEALED TO BE VALID.
 James B. Whittum, P.E.
 FL # 0027689
 8533 Acorn Ridge Ct.
 Tampa, Florida 33625
 813-926-9719

James B. Whittum
 JUN 2 2003

THIS DOCUMENT MUST BE SIGNED

CA2



SERIES-9000 ALUM HOR ROLLER WINDOW (IMPACT)
 NUIR WINDOWS AND DOORS
 8105 ANDERSON ROAD
 TAMPA, FL. 33684
 TEL. (800) 282-6627 FAX (813) 886-9737

revisions:	no.	date	by	description

date: 05/09/08
 scale: 1/2" = 1"
 dr. by: DJ
 chg. by:

drawing no.
HR9000
 SHEET 10

9000HR Design Pressures (psf) XOx: Fin Installation

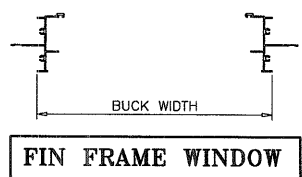
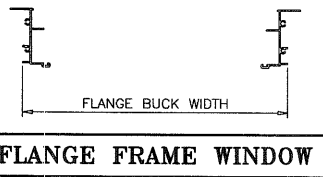
Buck Size (inches)		Call Name	# of Anchors			5/16" An.				5/16" IG				5/16" HS				7/16" An.				7/16" HS			
Width	Height					Deck Screw	#10 SM Screw	Deck Screw	#10 SM Screw	Deck Screw	#10 SM Screw	Deck Screw	#10 SM Screw	Deck Screw	#10 SM Screw	Deck Screw	#10 SM Screw	Deck Screw	#10 SM Screw	Deck Screw	#10 SM Screw	Deck Screw	#10 SM Screw	Deck Screw	#10 SM Screw
		Jamb	Hdr	Sill	Ext.(+)	Int.(-)	Ext.(+)	Int.(-)	Ext.(+)	Int.(-)	Ext.(+)	Int.(-)	Ext.(+)	Int.(-)	Ext.(+)	Int.(-)	Ext.(+)	Int.(-)	Ext.(+)	Int.(-)	Ext.(+)	Int.(-)			
72	24	6020	4	8	8	55.0	55.0	55.0	55.0	55.0	55.0	55.0	55.0	55.0	55.0	55.0	55.0	55.0	55.0	55.0	55.0	55.0			
84	24	7020	4	10	10	55.0	55.0	55.0	55.0	55.0	55.0	55.0	55.0	55.0	55.0	55.0	55.0	55.0	55.0	55.0	55.0	55.0			
96	24	8020	4	11	11	55.0	55.0	55.0	55.0	55.0	55.0	55.0	55.0	55.0	55.0	55.0	55.0	55.0	55.0	55.0	55.0	55.0			
108	24	9020	4	12	12	55.0	55.0	55.0	55.0	55.0	55.0	55.0	55.0	55.0	55.0	55.0	55.0	55.0	55.0	55.0	55.0	55.0			
72	36	6030	5	8	8	55.0	55.0	55.0	55.0	55.0	55.0	55.0	55.0	55.0	55.0	55.0	55.0	55.0	55.0	55.0	55.0	55.0			
84	36	7030	5	10	10	55.0	55.0	55.0	55.0	55.0	55.0	55.0	55.0	55.0	55.0	55.0	55.0	55.0	55.0	55.0	55.0	55.0			
96	36	8030	5	11	11	55.0	55.0	55.0	55.0	55.0	55.0	55.0	55.0	55.0	55.0	55.0	55.0	55.0	55.0	55.0	55.0	55.0			
108	36	9030	5	12	12	55.0	55.0	55.0	55.0	55.0	55.0	55.0	55.0	55.0	55.0	55.0	55.0	55.0	55.0	55.0	55.0	55.0			
72	48	6040	6	8	8	55.0	55.0	55.0	55.0	55.0	55.0	55.0	55.0	55.0	55.0	55.0	55.0	55.0	55.0	55.0	55.0	55.0			
84	48	7040	6	10	10	55.0	55.0	55.0	55.0	55.0	55.0	55.0	55.0	55.0	55.0	55.0	55.0	55.0	55.0	55.0	55.0	55.0			
96	48	8040	6	11	11	55.0	55.0	55.0	55.0	55.0	55.0	55.0	55.0	55.0	55.0	55.0	55.0	55.0	55.0	55.0	55.0	55.0			
108	48	9040	6	12	12	55.0	55.0	55.0	55.0	55.0	55.0	55.0	55.0	55.0	55.0	55.0	55.0	55.0	55.0	55.0	55.0	55.0			
72	60	6050	7	8	8	55.0	55.0	55.0	55.0	55.0	55.0	55.0	55.0	55.0	55.0	55.0	55.0	55.0	55.0	55.0	55.0	55.0			
84	60	7050	7	10	10	55.0	55.0	55.0	55.0	55.0	55.0	55.0	55.0	55.0	55.0	55.0	55.0	55.0	55.0	55.0	55.0	55.0			
96	60	8050	7	11	11	55.0	55.0	55.0	55.0	55.0	55.0	55.0	55.0	55.0	55.0	55.0	55.0	55.0	55.0	55.0	55.0	55.0			
108	60	9050	7	12	12	54.0	54.0	55.0	55.0	54.0	54.0	55.0	55.0	54.0	54.0	55.0	55.0	54.0	54.0	55.0	55.0	55.0			
72	62	-	7	8	8	55.0	55.0	55.0	55.0	55.0	55.0	55.0	55.0	55.0	55.0	55.0	55.0	55.0	55.0	55.0	55.0	55.0			
84	62	-	7	10	10	55.0	55.0	55.0	55.0	55.0	55.0	55.0	55.0	55.0	55.0	55.0	55.0	55.0	55.0	55.0	55.0	55.0			
96	62	-	7	11	11	55.0	55.0	55.0	55.0	55.0	55.0	55.0	55.0	55.0	55.0	55.0	55.0	55.0	55.0	55.0	55.0	55.0			
110	62	-	7	12	12	55.0	55.0	55.0	55.0	55.0	55.0	55.0	55.0	55.0	55.0	55.0	55.0	55.0	55.0	55.0	55.0	55.0			

9000HR Design Pressures (psf) XOx: Masonry

Buck Size (inches)		Call Name	# of 1/4 Screws			5/16" An.		5/16" IG		5/16" HS		7/16" An.		7/16" HS	
Width	Height					Jamb	Hdr	Sill	Ext.(+)	Int.(-)	Ext.(+)	Int.(-)	Ext.(+)	Int.(-)	Ext.(+)
72	24	6020	3	6	6	55.0	55.0	55.0	55.0	55.0	55.0	55.0	55.0	55.0	
84	24	7020	3	7	7	55.0	55.0	55.0	55.0	55.0	55.0	55.0	55.0	55.0	
96	24	8020	3	8	8	55.0	55.0	55.0	55.0	55.0	55.0	55.0	55.0	55.0	
108	24	9020	3	9	9	55.0	55.0	55.0	55.0	55.0	55.0	55.0	55.0	55.0	
72	36	6030	3	6	6	55.0	55.0	55.0	55.0	55.0	55.0	55.0	55.0	55.0	
84	36	7030	3	7	7	55.0	55.0	55.0	55.0	55.0	55.0	55.0	55.0	55.0	
96	36	8030	3	8	8	55.0	55.0	55.0	55.0	55.0	55.0	55.0	55.0	55.0	
108	36	9030	3	9	9	55.0	55.0	55.0	55.0	55.0	55.0	55.0	55.0	55.0	
72	48	6040	4	6	6	55.0	55.0	55.0	55.0	55.0	55.0	55.0	55.0	55.0	
84	48	7040	4	7	7	55.0	55.0	55.0	55.0	55.0	55.0	55.0	55.0	55.0	
96	48	8040	4	8	8	55.0	55.0	55.0	55.0	55.0	55.0	55.0	55.0	55.0	
108	48	9040	4	9	9	55.0	55.0	55.0	55.0	55.0	55.0	55.0	55.0	55.0	
72	60	6050	5	6	6	55.0	55.0	55.0	55.0	55.0	55.0	55.0	55.0	55.0	
84	60	7050	5	7	7	55.0	55.0	55.0	55.0	55.0	55.0	55.0	55.0	55.0	
96	60	8050	5	9	9	55.0	55.0	55.0	55.0	55.0	55.0	55.0	55.0	55.0	
108	60	9050	5	10	10	55.0	55.0	55.0	55.0	55.0	55.0	55.0	55.0	55.0	
72	62	-	6	7	7	55.0	55.0	55.0	55.0	55.0	55.0	55.0	55.0	55.0	
84	62	-	6	9	9	55.0	55.0	55.0	55.0	55.0	55.0	55.0	55.0	55.0	
96	62	-	6	10	10	55.0	55.0	55.0	55.0	55.0	55.0	55.0	55.0	55.0	
110	62	-	6	11	11	55.0	55.0	55.0	55.0	55.0	55.0	55.0	55.0	55.0	

DESIGN LOAD ANALYSIS NOTES:
 -VALUES BASED ON FA201, 202, & 203 TEST RESULTS.
 -STRUCTURAL ANALYSIS NOT APPLICABLE FOR IMPACT-RESISTANT PRODUCTS.
 -GLASS ANALYSIS PER ASTM E1300.
 -FASTENER CALCULATIONS FOR SHEAR AND BENDING HAVE BEEN CALCULATED WITH A .164" SCREW DIAMETER (FOR 1/4" NOMINAL) AND WITHOUT A 1/3 LOAD INCREASE.

XOX - LIMIT EXTERIOR (+) LOADS AS FOLLOWS
 WITHOUT 1" SILL HEIGHT EXTENDER = +45.0 PSF
 WITH 1" SILL HEIGHT EXTENDER = +65.0 PSF



AND SEALED TO BE VALID.
 James B. Whittum, P.E.
 FL # 0027689
 8533 Acorn Ridge Ct.
 Tampa, Florida 33625
 813-926-9719

James B. Whittum
 JUL 09 2008

THIS DOCUMENT MUST BE SIGNED

CA3



SERIES-9000 ALUM. HOR. ROLLER WINDOW (IMPACT)
 NUAIR WINDOWS AND DOORS
 8105 ANDERSON ROAD
 TAMPA, FL 33684
 TEL. (800) 282-6627 FAX (813) 886-9737

no.	date	by	description

date: 05/09/08
 scale: 1/2" = 1"
 dr. by: DJ
 chk. by:

drawing no.
 HR9000
 SHEET 11